

Attachment A4

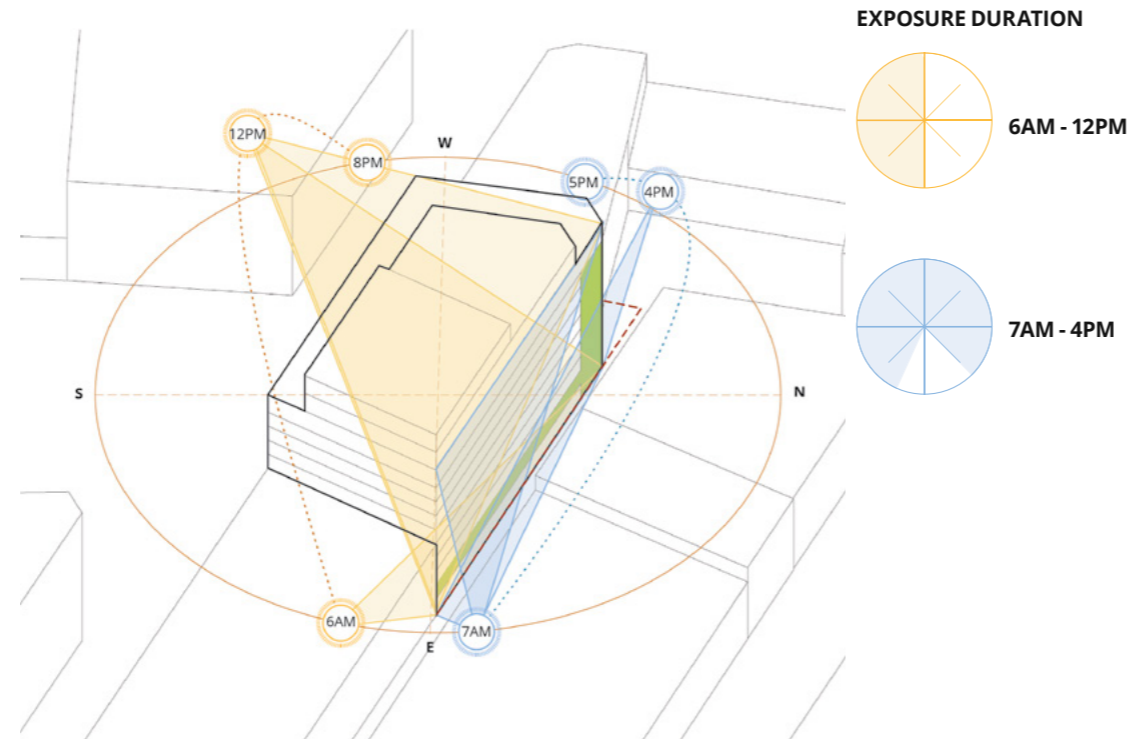
Landscape Report

Solar Exposure

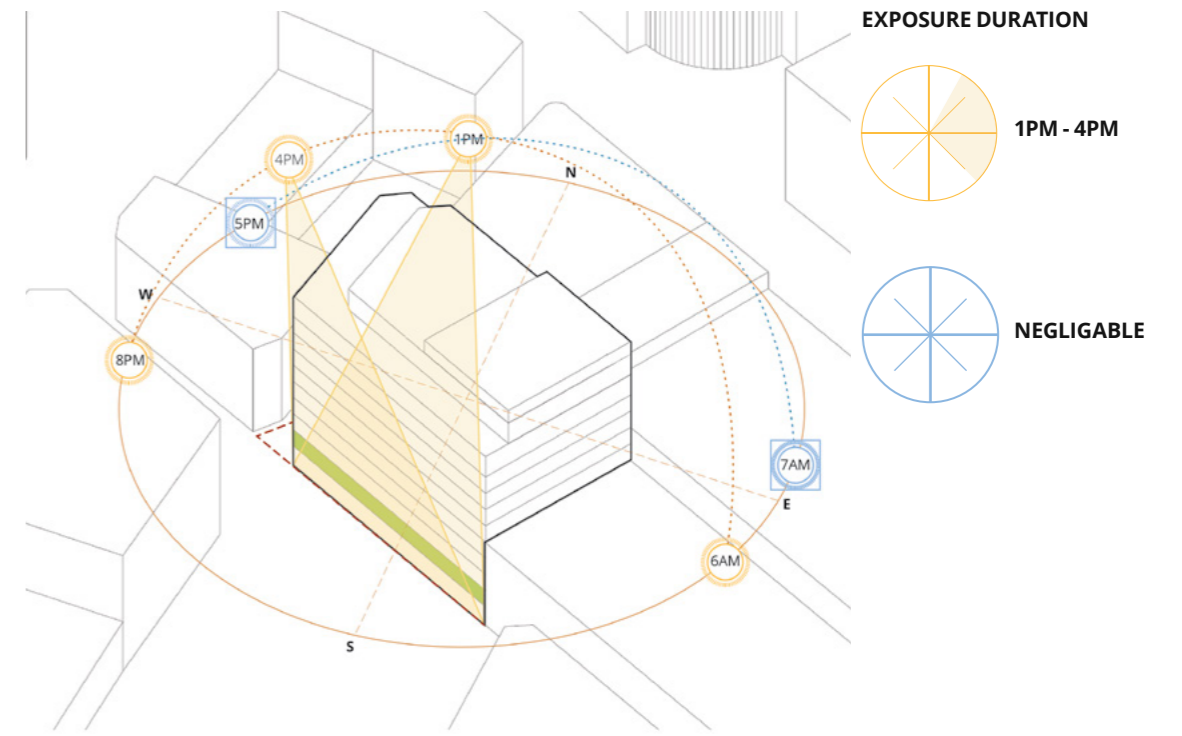
Understanding the solar exposure of the facades and rooftop areas is essential for gaining insights into the environment, which is crucial for planning rooftop landscaping and layout guidance.

The 3D analysis based on positioning the project model and its contextual surroundings in the real-world coordinates in SketchUp.

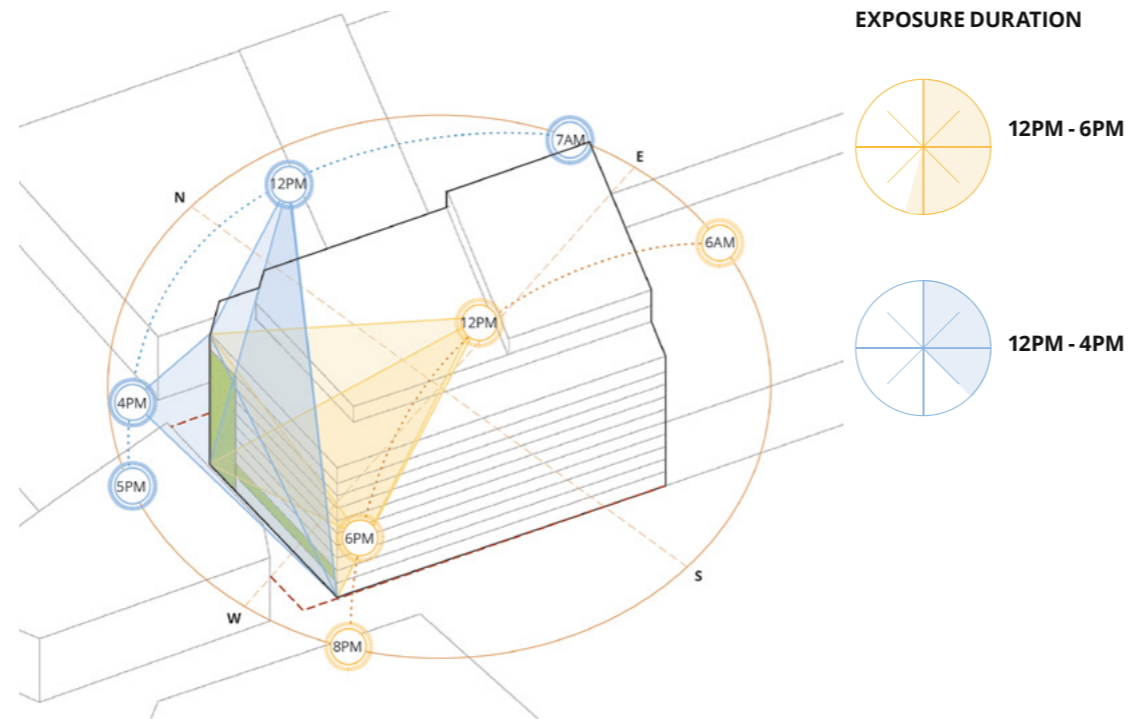
Sophia St Facade (North Facing)



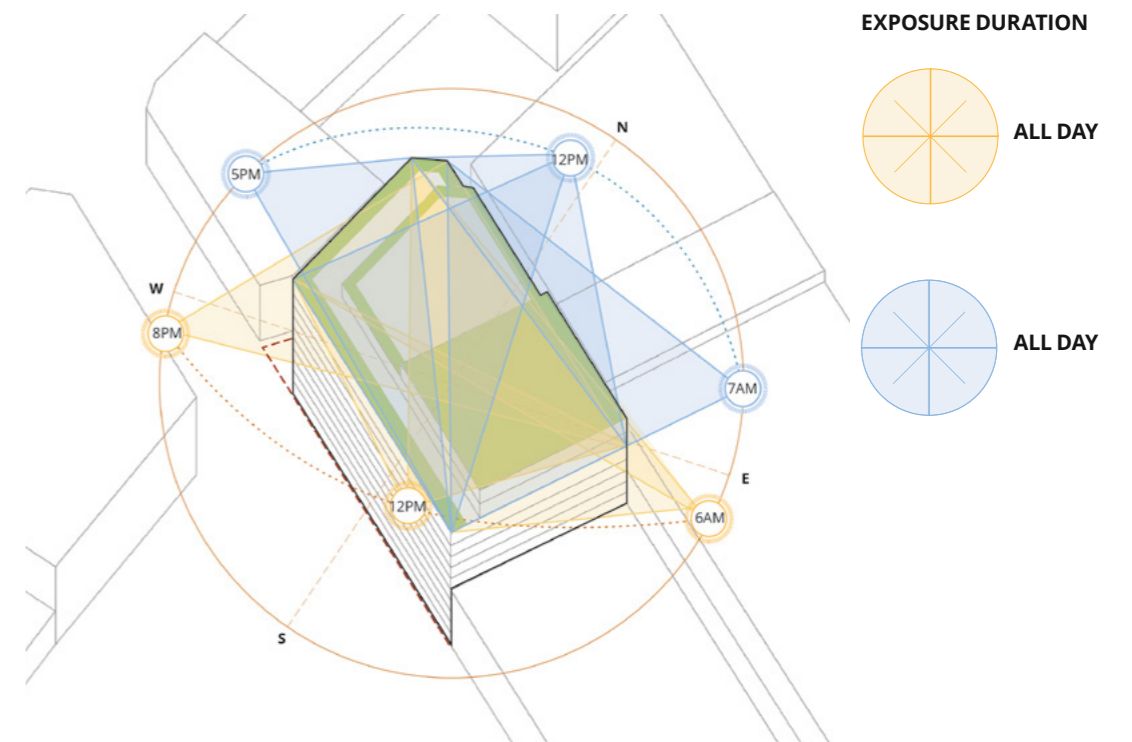
Kippax St Facade (South-West Facing)



Terry Street Facade (North-West Facing)



Rooftop Garden



- KEY**
-  SUMMER SUN EXPOSURE CLOCK
 -  WINTER SUN EXPOSURE CLOCK
 -  SUMMER SUN PATH
 -  WINTER SUN PATH
 -  TIME OF SUMMER SUN EXPOSURE
 -  TIME OF WINTER SUN EXPOSURE

Landscape Concept / Level 10

241

PLANTING SPECIES REFER TO
SOFTWARES PLANS & PLANTING
SCHEDULE

20mm RECYCLED STONE MULCH

HYDROCELL 40 MEDIA MIX

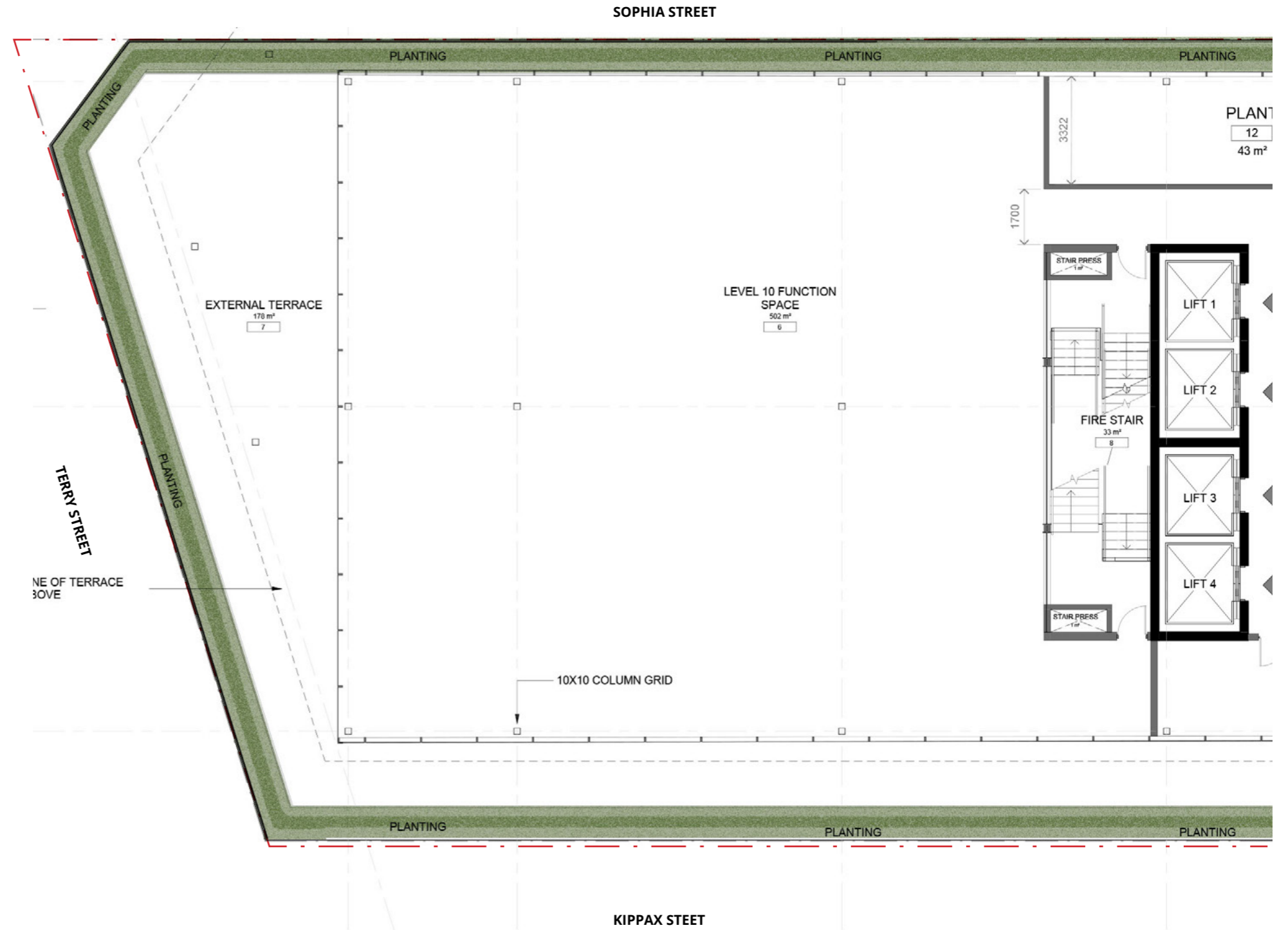
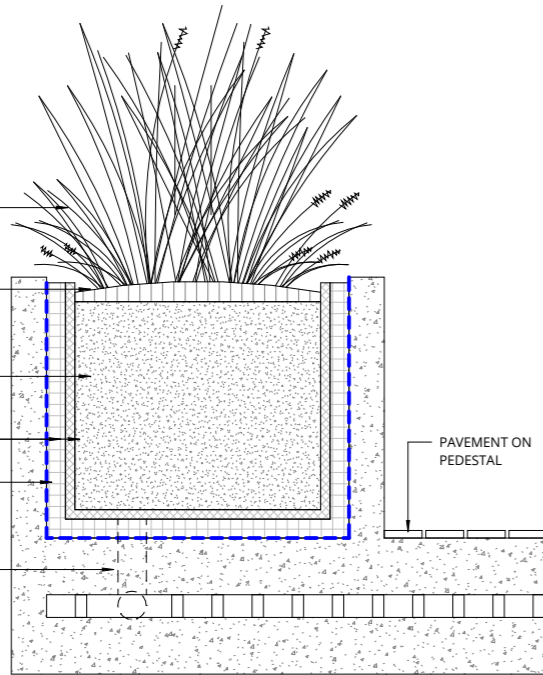
DRAINAGE CELL & GEOTEXTILE
FABRIC

WATERPROOF MEMBRANE

DRAINAGE

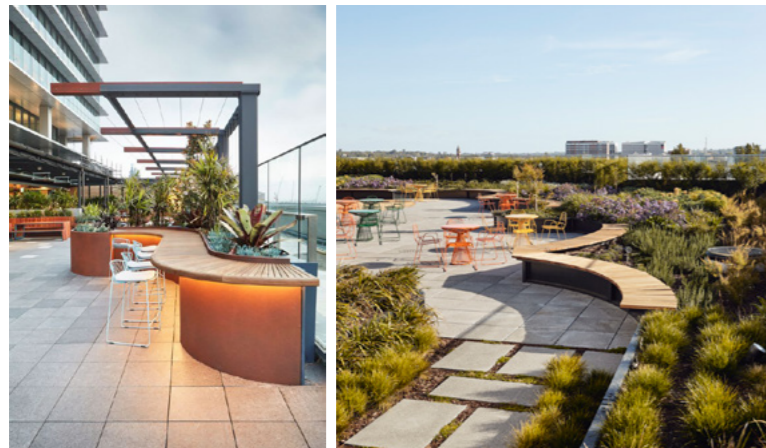
PAVEMENT ON
PEDESTAL

TYPICAL DETAIL 1:20



1:150 @ A3 0 1.5 3 4.5 6m

Landscape Concept / Roof Terrace Level 11



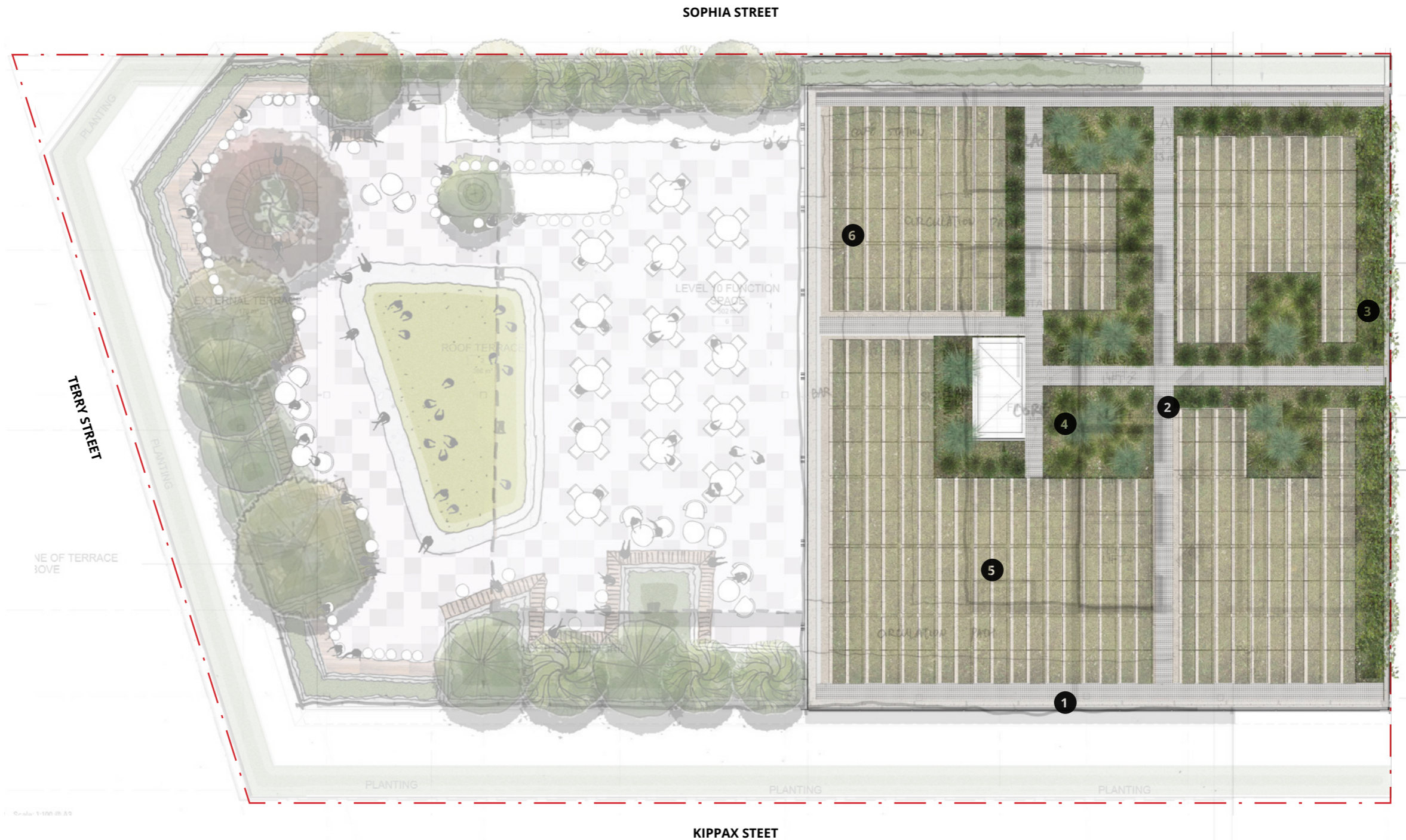
242



1:150 @ A3 0 1.5 3 4.5 6m

Landscape Concept / Green Roof

243



- 1 Concrete hob along edges (200mm thick)
- 2 Maintenance path (600mm wide)
- 3 Perimeter planting with cascading plants to the edge)
- 4 Dense planting zone with small shrubs and low grasses
- 5 Low planting zone with groundcovers
- 6 Mulch/decomposed granite under area not suitable for planting